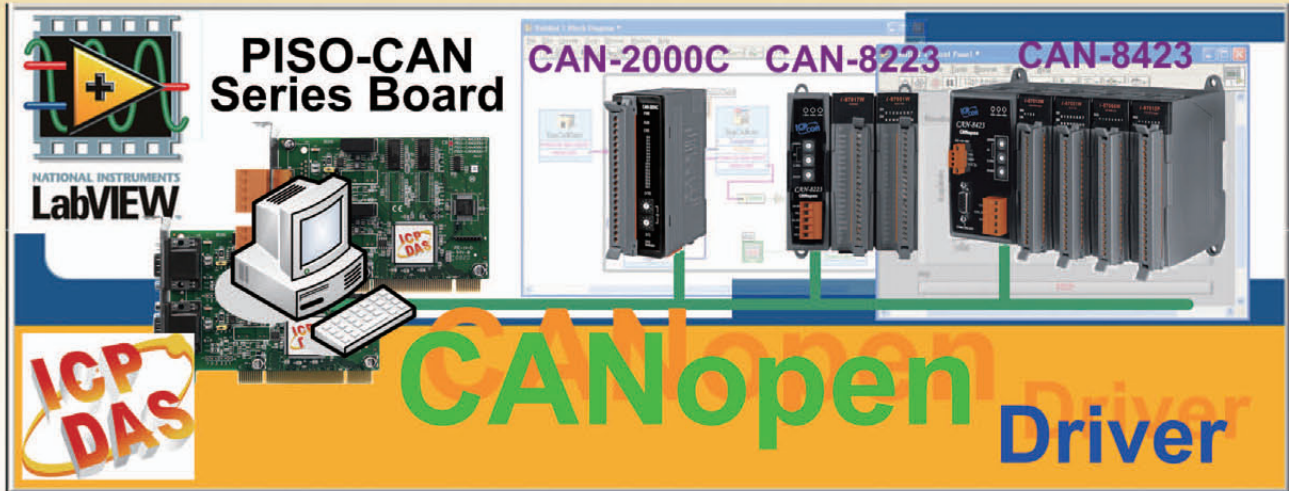


CANopen Software



CANopen Master LabVIEW Driver



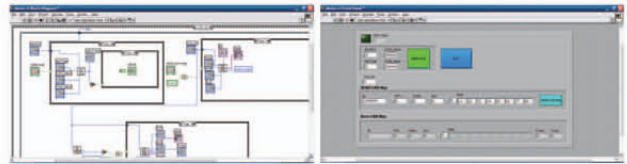
CANopen Series

In order to implement CANopen communication by NI LabVIEW software, ICP DAS provides a set of CANopen component in the LabVIEW driver. You only need to have the basic technology of the CANopen protocol. And then through few simple steps can finish the communication between your PC and the remote CANopen devices. Therefore, the ICP DAS LabVIEW driver can help you not only to develop your application rapidly and quickly, but also to reduce the complexity of applications.

Features

- NMT: Master
- CANopen Version: DS-301 v4.02
- Slave nodes support 1 ~ 127
- Error Control: Support Guarding protocol
- Support EMCY and SYNC protocol
- Provide dynamic PDO functions
- Support SDO segment and block protocol
- Driver support Windows 98/ME/NT/2K/XP

Demos Features



About the CANopen LabVIEW driver, we provide some demos for users to refer to. In these demos, most commonly used functions are used and users can refer these functions to design CANopen application himself. There also has detailed description for all functions in the CANopen library user manual.

Hardwares Support

PISO-CAN200-D PISO-CAN200-T	Comply with 33MHz 32-bit 5V PCI bus (V2.1). Support plug-and-play and provide 2 CAN channels with D-Sub 9-pin connector or 5-pin screw terminal connector
PISO-CAN200U-D PISO-CAN200U-T	Comply with Universal PCI bus. Support plug-and-play and provide 2 CAN channels with D-Sub 9-pin connector or 5-pin screw terminal connector
PISO-CAN400-D PISO-CAN400-T	Comply with 33MHz 32-bit 5V PCI bus (V2.1). Support plug-and-play and provide 4 CAN channels with D-Sub 9-pin connector or 5-pin screw terminal connector
PISO-CAN400U-D PISO-CAN400U-T	Comply with Universal PCI bus. Support plug-and-play and provide 4 CAN channels with D-Sub 9-pin connector or 5-pin screw terminal connector
PEX-CAN200i-D PEX-CAN200i-T	Support XI link PCI Express bus and provide 2 CAN channels with D-Sub 9-pin connector or 5-pin screw terminal connector
PCM-CAN100 PCM-CAN200	1/2-Port Isolated Protection CAN Communication PCI-104 Module with 9-pin D-sub connector
PCM-CAN200P	2-Port Isolated Protection CAN Communication PC-104+ Module with 9-pin D-sub connector
ADP-9-D	2-port CAN expansion daughter board with D-sub 9-pin connectors
ADP-9-T	2-port CAN expansion daughter board with screwed terminal connectors